

# **KAUP Attachments** **for Construction Machinery**



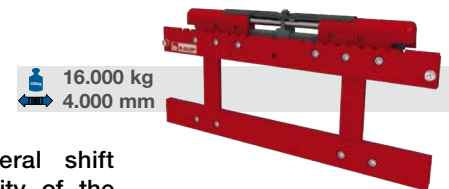
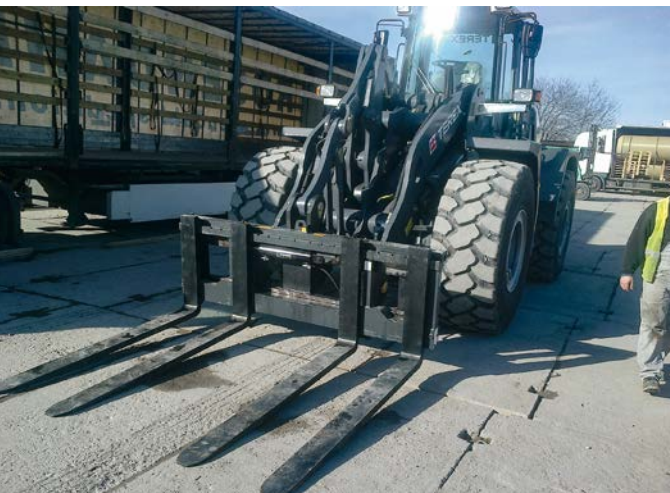
A high degree of flexibility and versatility is required for material handling with construction machinery. Regardless if used in civil engineering, demolition, landscaping, recycling, waste management or in the forestry industry – the machines are used for various applications in order to achieve a high degree of productivity and operating efficiency. A wide range of attachments which are easy to mount and quickly dismount are a guarantee for efficient and flexible operation of construction machinery.

Innovation, reliable technology, the high standard of quality of the attachments and excellent value for money, designs that allow easy and economical servicing and as good as one-hundred percent availability of replacement parts have made KAUP GmbH & Co. KG the leading European manufacturer of attachments for forklift trucks.

Based on the sophisticated KAUP Modular Built System nearly every material handling task can be configured and using state-of-the-art 3D CAD technology attachments are specifically matched to the requirements specified by the customer. But KAUP attachments are not only for forklift trucks. Nearly every kind of KAUP attachment is suitable for wheel loaders, skid-steer loaders, telescopic loaders or any other type of construction machine and a large part of the 40.000 units produced annually are mounted on construction machines.

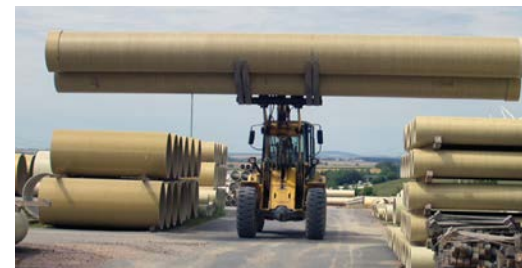
You can trust our proven ability to efficiently solve almost any material handling task.

## Sideshifters



KAUP Sideshifters allow lateral shift of the load, taking the capacity of the construction machine into account, of  $\pm 100$  up to  $\pm 160$  mm so that approach inaccuracies can be compensated.

When fitted with a suitable fork carriage the carrying part can be widened to 4 m in order to safely pick up loads such as pipes, construction steel or precast concrete elements.

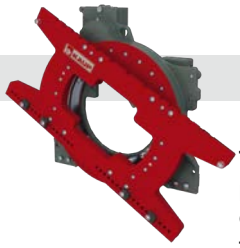


## Fork Positioners



KAUP Fork Positioners are an important accessory of the construction machine, especially when the widths of the loads change constantly. Adjustment of the distance between forks accommodating to different widths is an important safety aspect in this kind of operation. Using a fork positioner the driver can easily adjust the distance between forks from the driver seat. This ensures exact and precise working with the fork positioner which guarantees high job performance with a low risk of accidents.

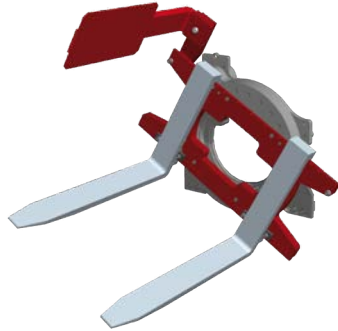




75.000 kg  
3.000 mm

The standard version of the KAUP Rotator is equipped with a fork carriage. It can be rotated 360° endless, containers with a slip-in underlay can be turned for emptying. Standard forks with normal widths can be fixed by means of square stops, included in the delivery, which are bolted onto the lower carriage bar.

Rotators can additionally be fitted with a lateral supporting plate, with a down-hold for boxes and crates without a slip-in underlay and with a wider fork carriage in order to meet the specifications of each particular application.



## Rotators

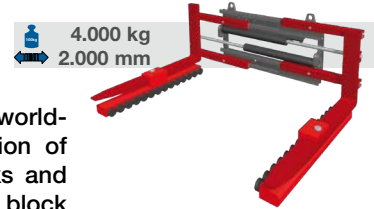


## Rotators with separate sideshift

Within the framework of the KAUP modular built system Rotators belong to the group of rotating combinations. Additionally they can be equipped with a sideshift function which supplements the Rotator with a "lateral shift".



Block & Brick Clamps



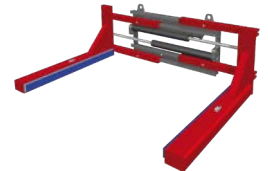
KAUP Block & Brick Clamps are used world-wide for the non-palletised transportation of industrially manufactured building blocks and bricks of any type. The large variety of block & brick clamps offered, as well as the option of individually adapting the attachment to meet specifications of a particular application, allow the ideal clamp to be configured for almost every single task.

The design of the Block & Brick Clamp components has been developed using the latest 3D technology to meet the specific requirements. As a result, the units feature high stability along with optimised tare weight, low lost load center and thus a very good residual capacity, excellent visibility because the design was optimised with regard to visibility, minimised wear, service-optimised construction, and thus low maintenance and operating costs.

Appropriate Block & Brick Clamp for each handling task:



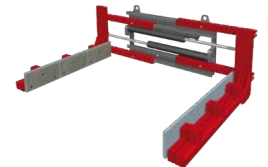
**T412V**  
Block Clamp with Vulkollan bars and parallel compensation.



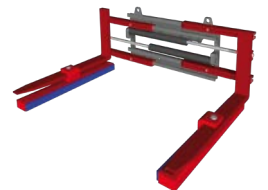
**T412H**  
Block & Brick Clamp with mechano-hydraulic equilibration pistons.



**T412HP**  
Block Clamp with mechano-hydraulic equilibration plates.



**T412UVP**  
Block Clamp with underslung block & brick arms with Vulkollan bars.



**T412UH**  
Block & Brick Clamp with underslung block & brick arms with mechano-hydraulic equilibration pistons.





## Bale Clamps

KAUP has a wide variety of clamps available for handling non-palletized loads. Bale clamps are designed primarily to handle bales of paper, tobacco or fabric as well as crates and containers. Specially designed clamping arms are used for transporting waste paper, polystyrene and big-bags. Clamps for handling bales at waste paper recycling plants are usually fitted with arms 2 metres in length, reinforced at the joint on the clamp profiles. These clamps have no difficulty loading and unloading trucks or rail waggons from the side.

Based on the KAUP modular built system, all bale clamps can be combined with the relevant rotator so that, if this operation is required, the clamped load can also be rotated.



### Appropriate bale clamp for each handling task:



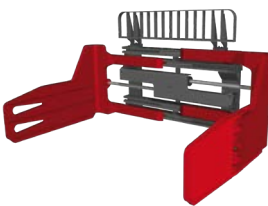
**T413B**  
Clamp arms with welded-on steel rods for handling e.g. bales of textiles or paper.



**T413RC**  
Highly robust arm design with corrugated / toothed bars for handling waste paper bales.



**T413R**  
Tube version for handling bales of foam rubber or bales of styrofoam and Big-Bags.



**T413B-1**  
Version with swivelling left arm for picking up bales with different dimensions and to adjust to different loads.

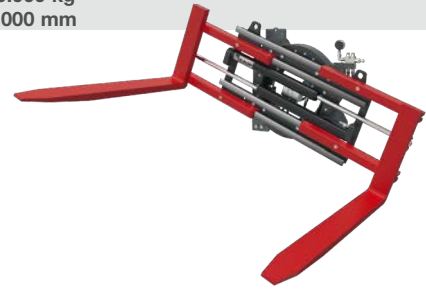
### Heavy Duty

KAUP clamps can be individually fitted or modified for the most demanding tasks. A Load Backrest, cylinder protection, cylinder and piston rod protection or sideshift cylinder protection, respectively hose protection, depending on the application of the clamp can be fitted to all models in order to reduce damages and to maximise the availability of the attachment.



Rotating Clamps

30.000 kg  
5.000 mm



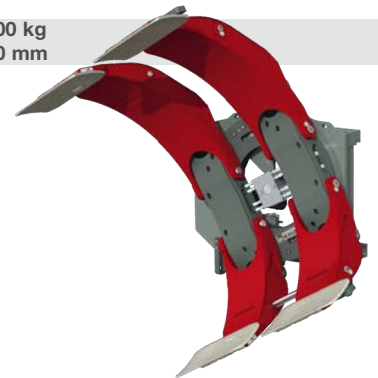
Due to the KAUP modular built system which includes Rotators as well as Clamps and Sideshifters, all clamps can be combined with a Rotator. Thus we can provide a solution for nearly every material handling task.

The best known Rotating Clamps are Fork Clamps, Bale Clamps and Pallet Turnover Clamps.



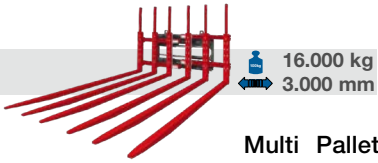
Rotating Roll Clamps

25.000 kg  
3.500 mm



KAUP Rotating Roll Clamps are used for gentle handling of all kinds of rolls. In addition to the rotating roll clamps with oscillating arms the KAUP range offers a great variety of clamps with parallel arm movement. The standard range comprises clamps of capacities ranging from 800 to 25.000 kg and for diameters from 250 to 3.300 mm. All rotating angles can be implemented with the rotating clamp versions. Rotation of 360° endless can be limited to 180° with end position cushioning.





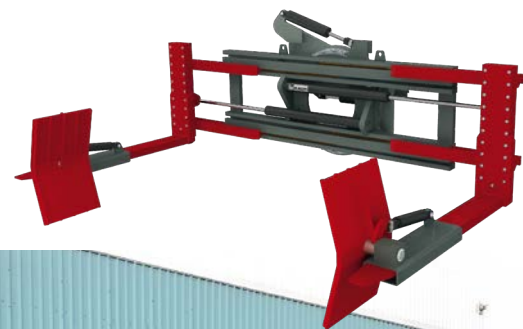
Multi Pallet Handlers are specific for transporting several pallets simultaneously. The forks of the multi pallet handlers can be moved together or spread apart as required. Therefore a centre pick up of the load is guaranteed. Multi pallet handlers are indispensable for rational transport where uniform palletized goods have to be moved. Initially they were found in beverage industry. Today they have also established and rationalized multi pallet handling in all other branches of industry such as Block & Brick or cement plants. Up to 8 pallets can be transported at the same time.

## Multi Pallet Handlers



## Tyre Handlers

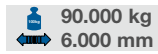
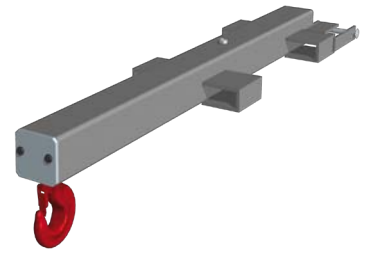
KAUP Tyre Handlers and Tyre Mounting Units are commonly used in mining. These attachments minimise downtime of mining trucks in operation due to damaged tyres and thus prove their profitability. Fitted with quick release couplings and quick change hooks it can adapt a wheel loader to tyre mounting equipment. Within a short period of time the defective tyre can be replaced and the mining truck is back in operation.



## Crane Jibs

KAUP Crane Jibs are available in different versions, fixed with manually adjustable hook positions, mechanically or manually telescopic, mechanically or manually swivable and/or fitted with a sideshift function. If only used occasionally a slip-on fork version is available, if used frequently a model mounted on a fork carriage is suitable.

Wheel loaders and Telescopic loaders fitted with a crane jib can easily carry out tasks normally restricted to mobile cranes. The secured centre position of the crane hook prevents slings being picked up by only one fork. Accidents caused by loads slipping and expensive exchange of bent forks which have been overloaded can be prevented.



## Carrying Rams

KAUP Carrying Rams are used for secure transportation of tubes, coils or other types of load with a hole in the middle. They are available for capacities of up to 90 tons, for ISO fork carriages, PIN-type mounting or individually fitted to suit the machines connection.



## Customised solutions



If the attachment required is not listed in our extensive product range we will be pleased to provide an optimum solution to each individual material handling requirement regardless of the capacity. We guarantee that we can equip your construction machinery to carry out any task.



KAUP attachments correspond to the requirements of the valid EC regulations regarding quality, safety and technical documentation. All technical data are subject to alteration.

KAUP is certified acc. to DIN EN ISO 9001



Helping hands for your Forklift truck

**KAUP GmbH & Co. KG**

Braunstrasse 17 · D - 63741 Aschaffenburg

☎ +49 6021 865-0 · 📠 +49 6021 865-213

✉ zentrale@kaup.de · 🌐 www.kaup.de